



# MARITEAM

- YACHTING -



## Grand Banks 42 Classic

LOA (m):	13.17 m
Beam (m):	4.29 m
Draft (m):	1.27 m
Engines:	2x 210hp Caterpillar
Cabins:	2
Homeport:	Heeg
Price:	€ (not set)

Grand Banks 42 Classic with hull number 1336

A cozy Grand Banks Classic with 5 beds, divided into 2 cabins. With the wanted Caterpillar 210 HP engines that ensure low consumption at 9 knots. Recently a stainless steel railing was placed, lacquered exterior woodwork and the entire teak deck sanded so the ship is ready for a new owner!

**MARITEAM YACHTING**

Ceresweg 20-B, 8938 BG Leeuwarden 📍 The Netherlands 📞 Phone +31 (0) 582 889254

[info@mariteamyachting.nl](mailto:info@mariteamyachting.nl) 📧 [www.mariteamyachting.nl](http://www.mariteamyachting.nl)

## Main specifications

Model:	42 Classic
LOA (m):	13.17 m
Beam (m):	4.29 m
Draft (m):	1.27 m
Year:	1996
Hull Material:	GRP
Cabins:	2
Sleeping places:	6
Number of main engine(s):	2
Power of main engine(s) (hp):	210
Brand of main engine(s):	Caterpillar
Price:	€ (not set)
VAT status:	Paid
HIN number:	GNDD1336A696

## General

Name :	-
Shipyard:	Grand Banks
Air draft (m):	3.99
Displacement (t):	15
Hull material:	GRP
Deck material:	GRP
Superstructure material:	GR
Deck finish:	Teak
Window material:	Single
Fuel tank (Litre and material):	2650L

Freshwater Tank (Liter and material):	1000L
Black water tank (Litre and material):	1x
Maximum speed (Kn):	12
Cruising speed (Kn):	9

## Accommodation

Stove:	4x Induction
Oven:	1x electric
Interior finish:	Teak
Washing machine:	1x
Single berths:	2x
Double bed:	2x
Cabins:	2x
Toilets:	2x electric
Showers:	2x

## Machinery

Port engine (Brand, type, hp, gearbox):	Caterpillar 3208, 210hp, Twin Disc MG-5061A
Engine hours port engine:	2411
Star engine (Brand, type, hp, gearbox):	Caterpillar 3208, 210hp Twin Disc MG-5061A
Engine hours starboard engine:	2413
Main engines control (Brand and type):	Morse 4 hendel
Drive (Shaft, IPS, Jet):	Shaft drive
Shaft lubrication:	Waterlubricated
Prop (Number of blades, material):	3 blade

Generator (Brand, type, Kw):	Onan 6.5 MDKDN 50 HZ
Bowthruster (Brand, type, elec/hyd):	Rheinstrom Koblenz, Electric
Electrical bilge pump:	2x
Manual bilge pump:	1x
Water pressure pump (Brand, model):	1x
Hot water system:	Seaward S1950
Heating system (brand, model, type):	Eberspächer
Trim system:	Boat Leveller
Macerator pump:	Sealand T 12
Steering system:	Hydraulic

## Electrical system

DC system (V) AC system (V):	12V230
Inverter (V/W/Amp):	Victron
Battery charger (V/W/Amp):	Victron

## Navigation system

Compass:	Ritchie
Gps plotter:	Raymarine E120
Radar screen:	Raymarine E120
Radar :	1x
Depth meter:	Autohelm depth
Log:	Autohelm TRIDATA
VHF:	Shipmate RS 8400
Autopilot:	Raymarine ST6002

Rudder indicator:	VDO
-------------------	-----

## Equipment

Anchor:	1x
Windlass:	Lofrans Tigres 1000W
Deck shower:	1x





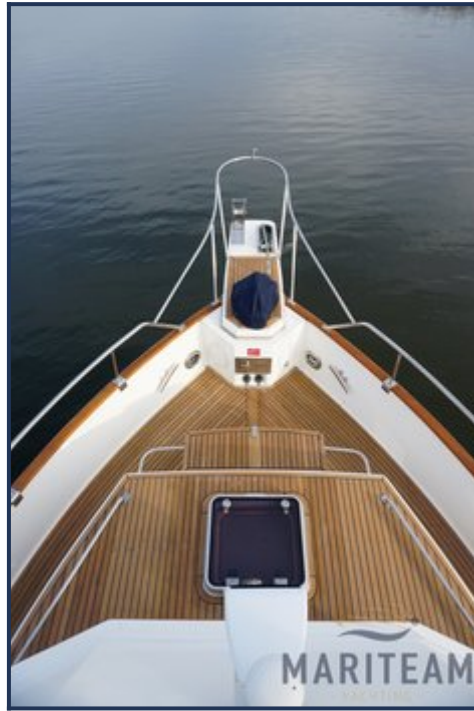














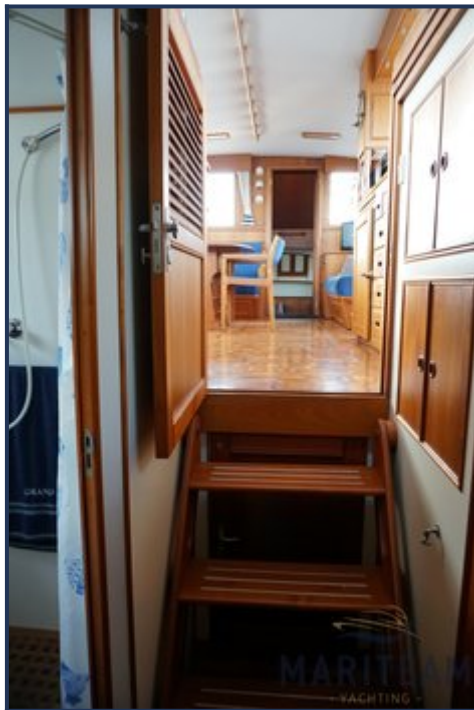








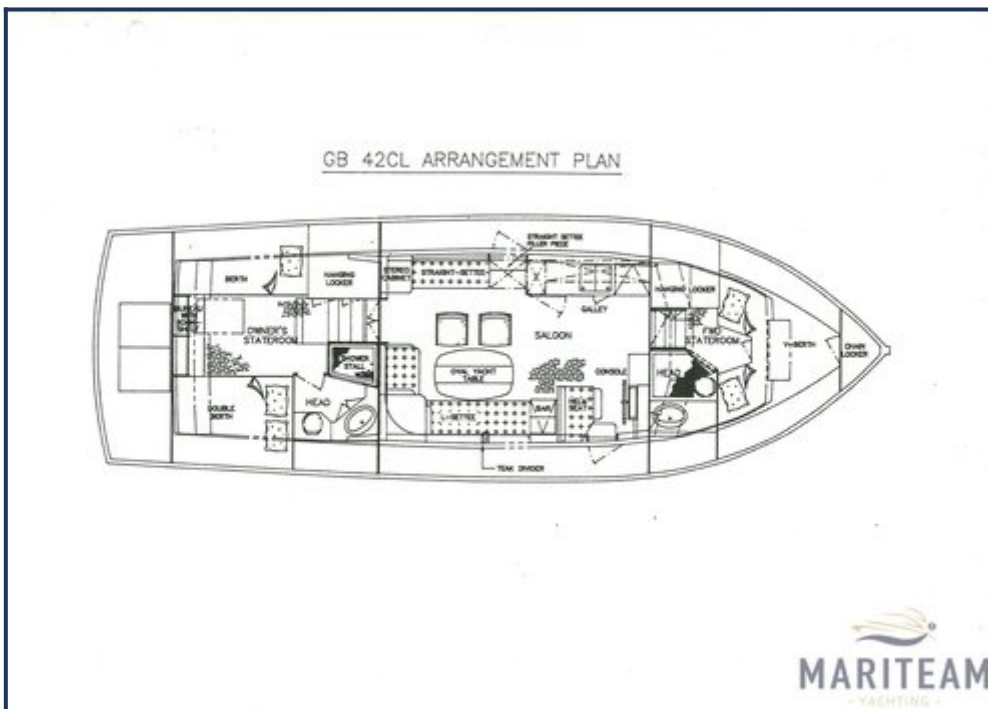












*These particulars are given in good faith as supplied but cannot be guaranteed and cannot be used for contracts.*