



Grand Banks 42 Europa 'LOTUS'

LOA (m):	12.98 m
Beam (m):	4.14 m
Draft (m):	1.27 m
Engines:	2x 135hp Ford
Cabins:	2
Homeport:	Sales office, Heeg
Price:	€ 226,000

The Grand Banks 42 Europa 'LOTUS' from 1991 is a classic and timeless motor yacht that, over the years, has remained one of the most coveted models. This specific model is equipped with two reliable 135 hp Ford Sabre engines, providing sufficient power for cruising and long-distance voyages. The synchronized motor system ensures smooth and efficient operation, allowing the two engines to seamlessly collaborate for improved performance.

Main specifications

Model:	42 Europa
LOA (m):	12.98 m
Beam (m):	4.14 m
Draft (m):	1.27 m
Year:	1991
Hull Material:	GRP
Cabins:	2
Sleeping places:	2
Number of main engine(s):	2
Power of main engine(s) (hp):	135
Brand of main engine(s):	Ford
Price:	€ 226,000
VAT status:	EU paid
Year launched:	1991

General

Name :	LOTUS
Shipyard:	American Marine Limited Singapore
CE-category:	Category B
Displacement (t):	15.5
Hull material:	GRP
Deck material:	GRP
Superstructure material:	GRP
Deck finish:	Teak
Window material:	Single Safety glas
Fuel tank (Litre and material):	2x 1136L, mild steel

Freshwater Tank (Liter and material):	1x 750 L, GRP
Antifouling (Year):	October 2023
Cruising speed (Kn):	8.5 kn @ 1900RPM

Accommodation

Stove:	Force 10 Electric
Oven:	Force 10 Electric
Refrigerator:	Isotherm Elegance
Interior finish:	Teak
Single berths:	1x
Double bed:	1x
Cabins:	2x
Toilets:	Jabsco
Showers:	1x
Combi oven/microwave:	Force 10 electric oven

Machinery

Port engine (Brand, type, hp, gearbox):	Ford Sabre, 135HP
Engine hours port engine:	2913
Star engine (Brand, type, hp, gearbox):	Ford Sabre, 135HP
Engine hours starboard engine:	2915
Main engines control (Brand and type):	Morse, Glendinning engine sinchronizer
Drive (Shaft, IPS, Jet):	Drive shaft
Prop (Number of blades, material):	4 blade
Generator (Brand, type, Kw):	Present, overhauled in 2021

Generator hours:	400
Water pressure pump (Brand, model):	Jabsco Par Max
Hot water system:	Boiler
Heating system (brand, model, type):	Wallas 30 D hot air
Steering system:	Mechanical

Electrical system

House battery (Number of battery, type, total Amp, year):	2x, 200 Amp
Start battery (Number of battery, type, total Amp, year):	2x, 200 Amp - 1x for generator.
DC system (V) AC system (V):	12V / 220 V - Separate backup system for electrical systems
Inverter (V/W/Amp):	Mastervolt 12/3000 100A Combi
Battery charger (V/W/Amp):	Mastervolt ChargeMaster

Safety system

Fire extinguisher engine room:	Present, automatic
Life raft:	Present, expired inspection.
EPIRB:	present

Navigation system

Compass:	1x
Gps plotter:	Raymarine plotter AXIOM +9 RV
Radar screen:	Raymarine plotter AXIOM +9

Radar :	Raymarine Quantum Doppler Radar
Depth meter:	Raymarine 3D-Vision
Autopilot:	Raymarine
Rudder indicator:	Quarz VDO

Equipment

Anchor:	1x, Drag Anchor
Windlass:	Elektric
Gangway:	Manual folding gangway.
Tender crane:	Pulley system.
Tender:	Tender + 7pk engine
Window ventilation:	Sliding and tilting windows.
Horn:	present









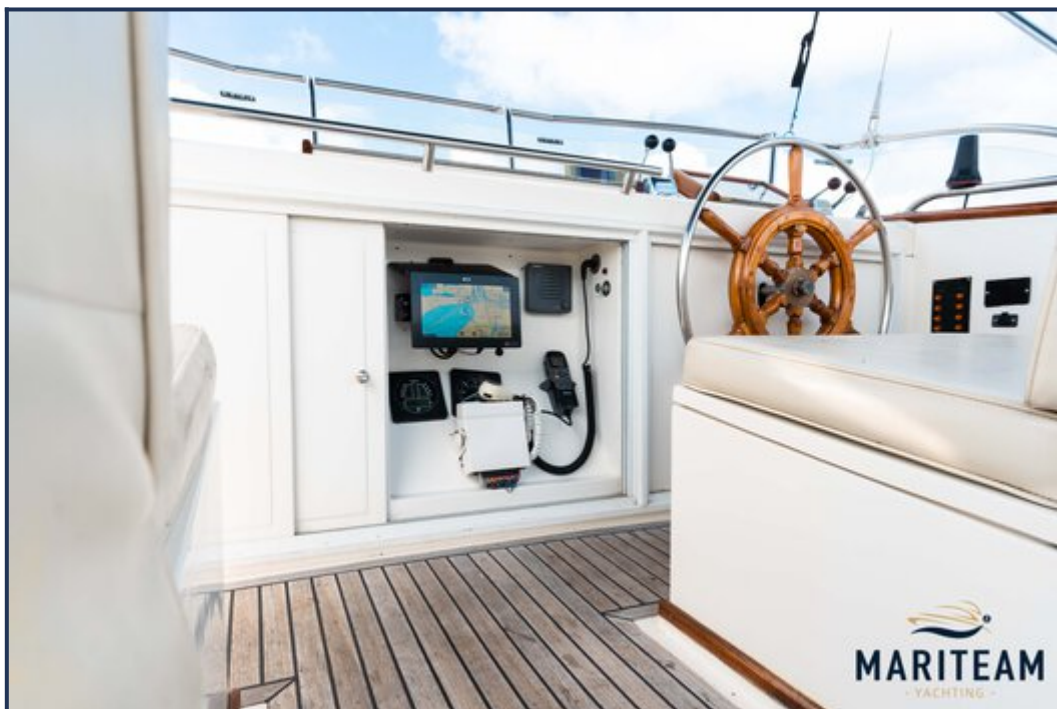


















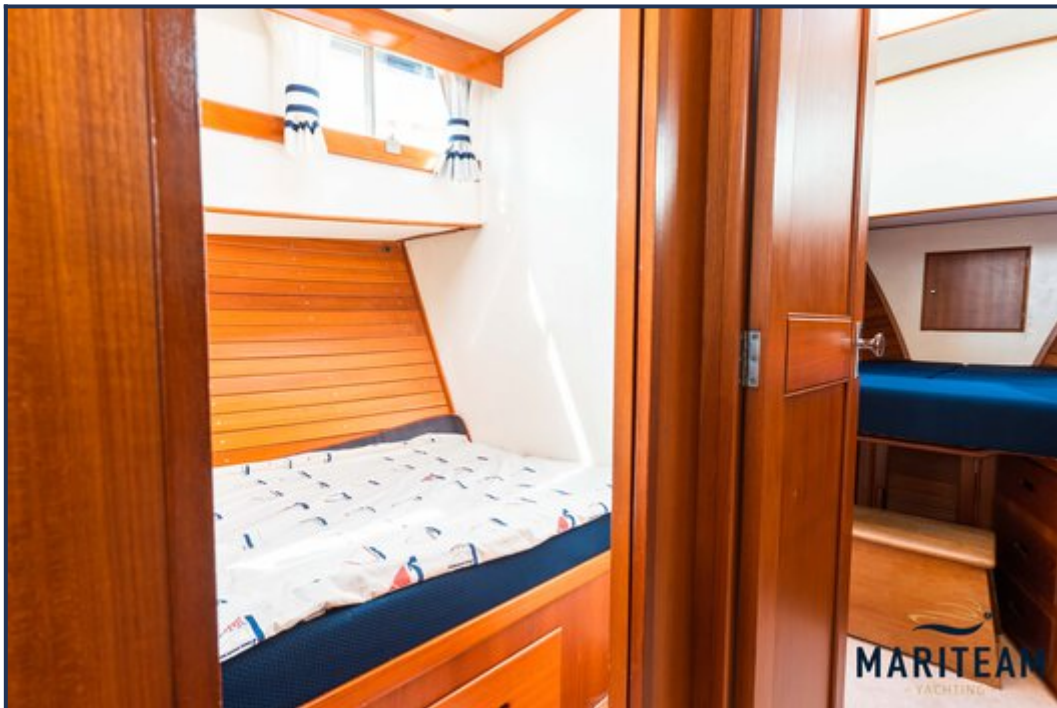


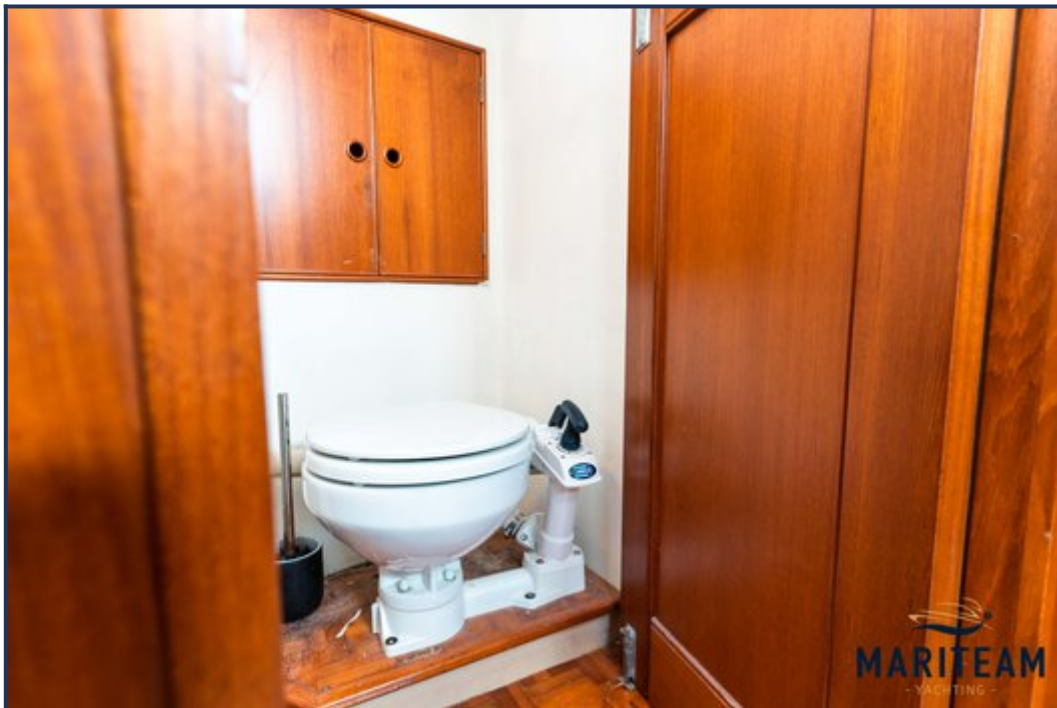
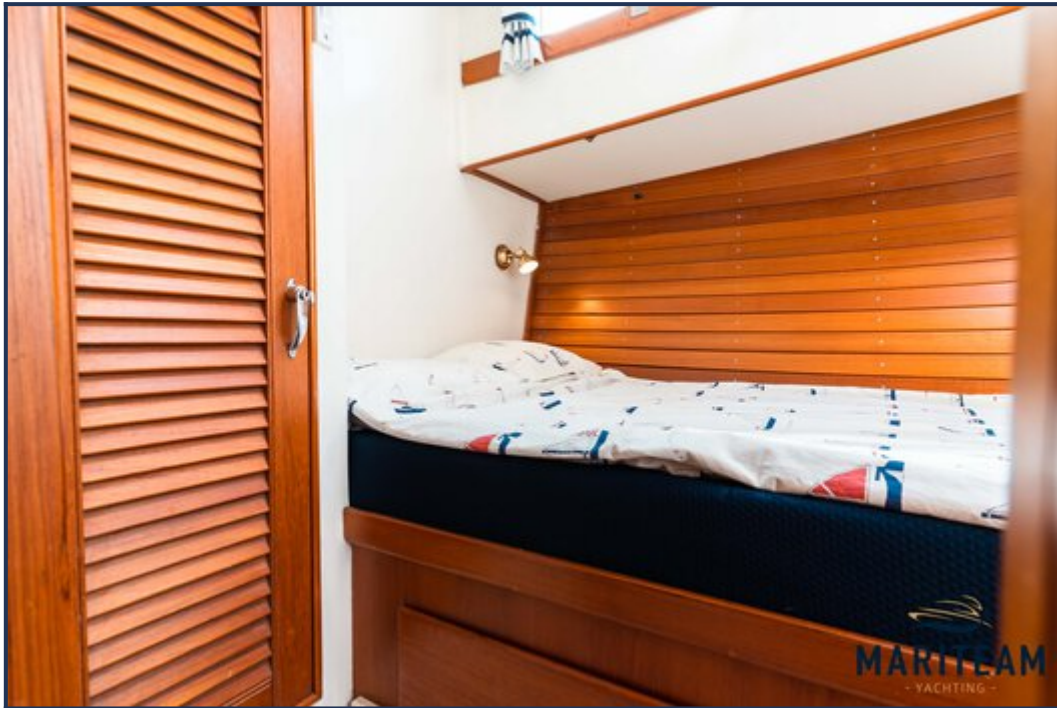




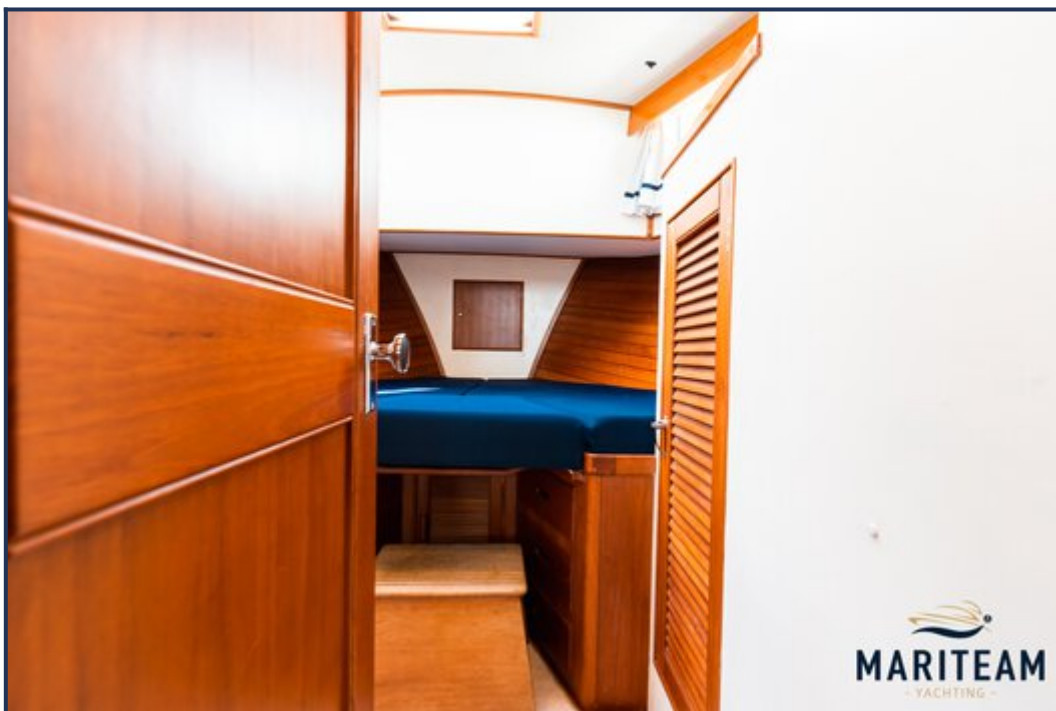


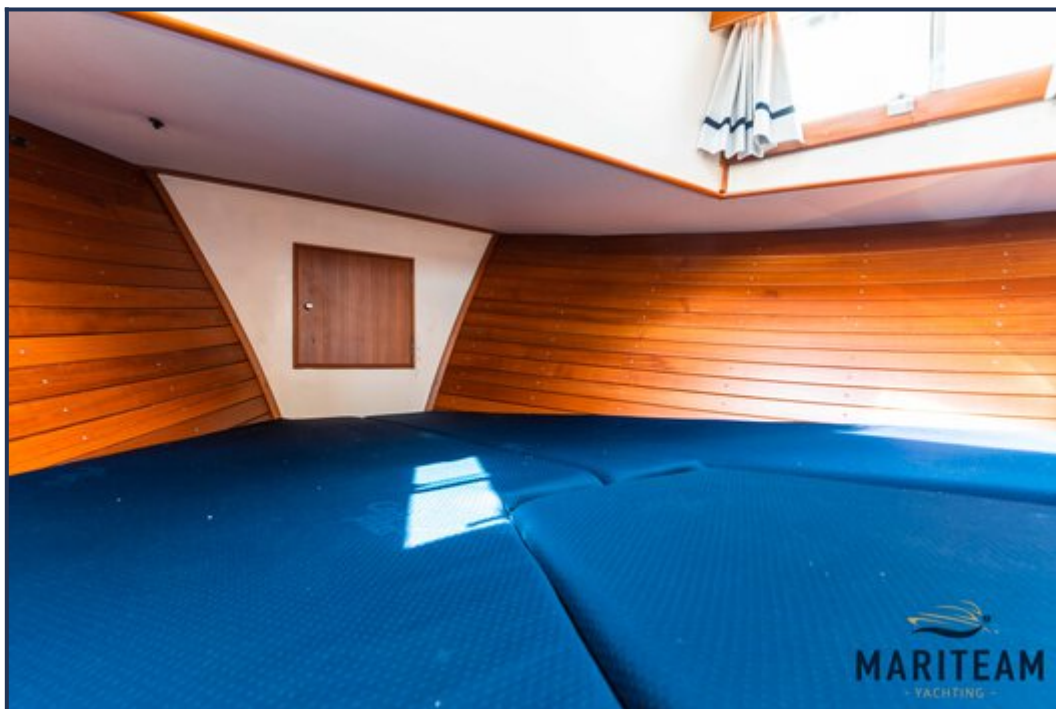
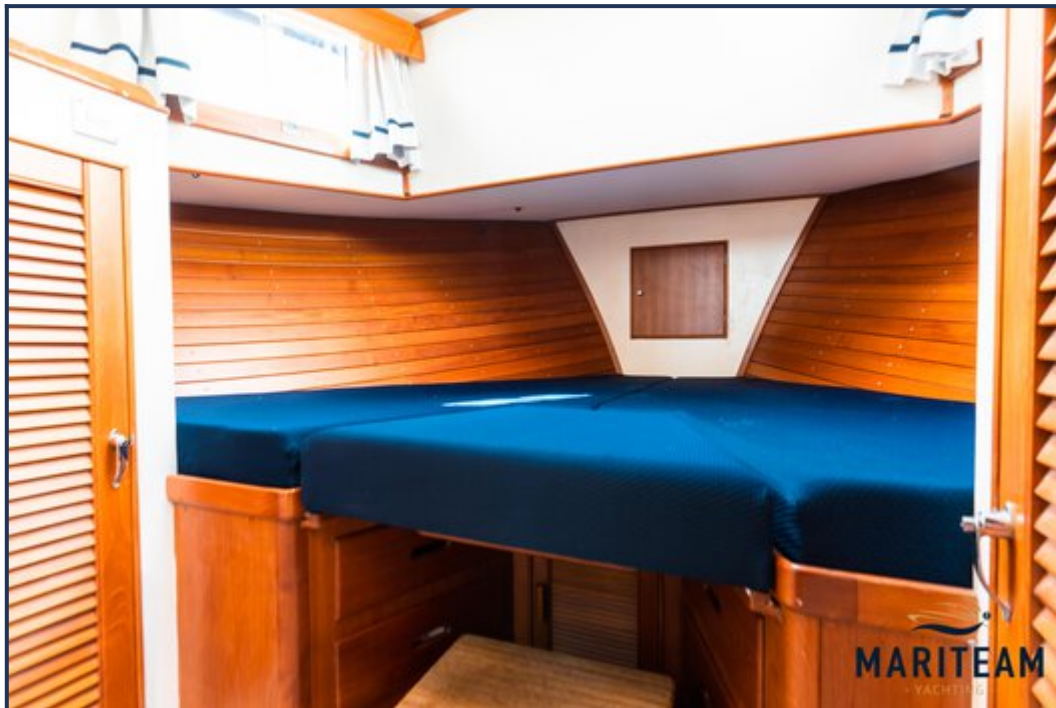


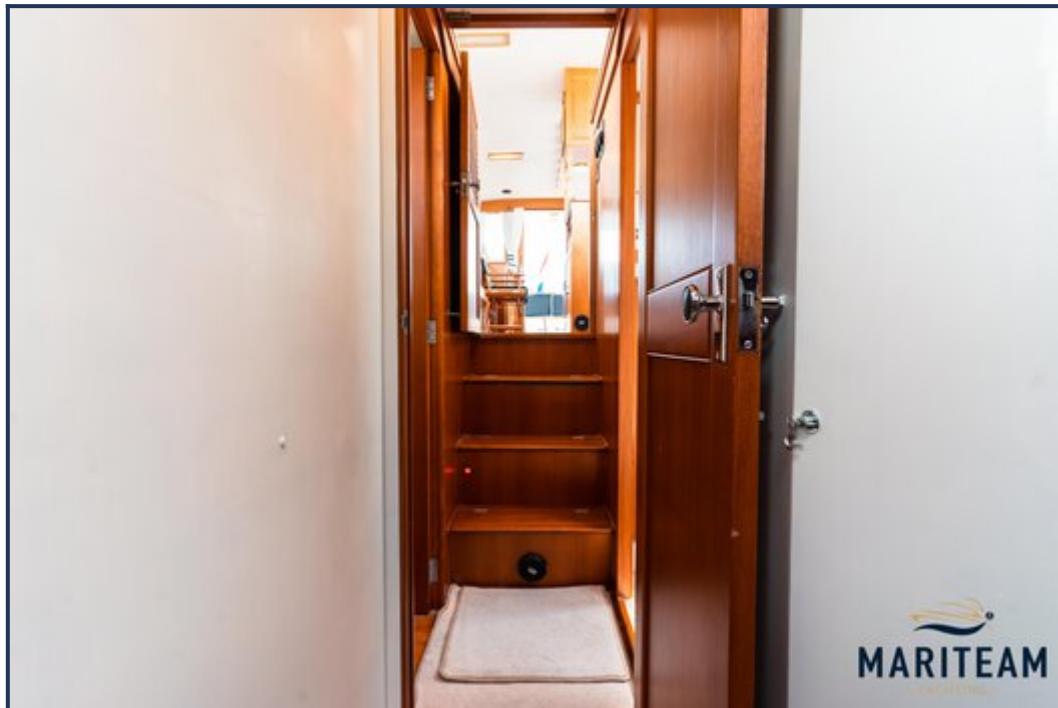


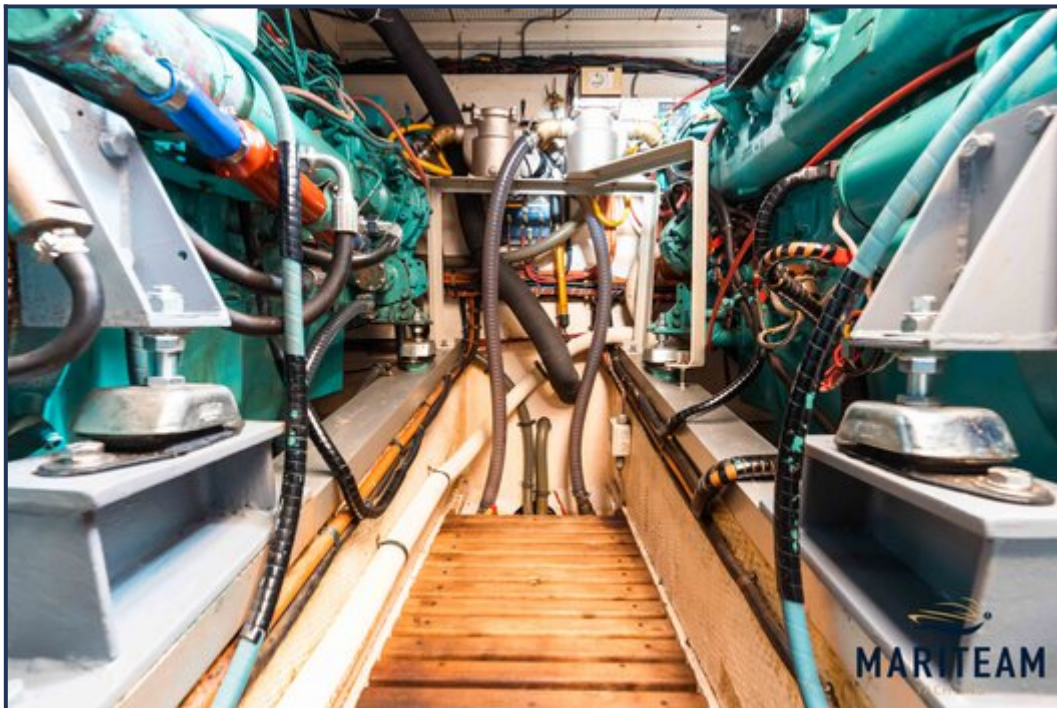
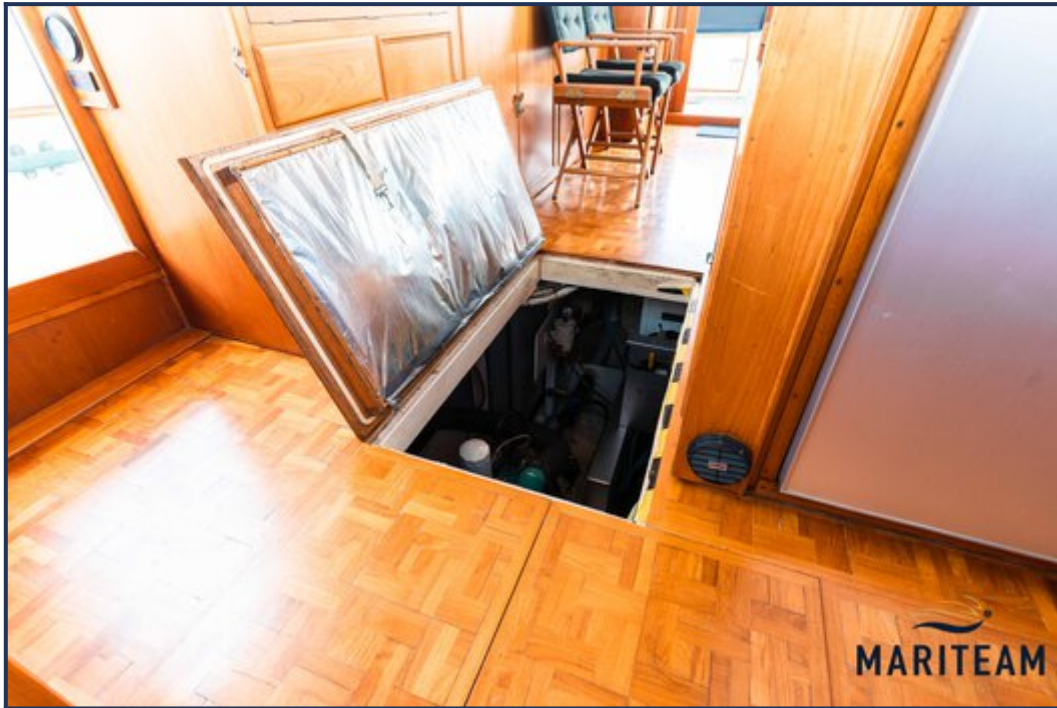


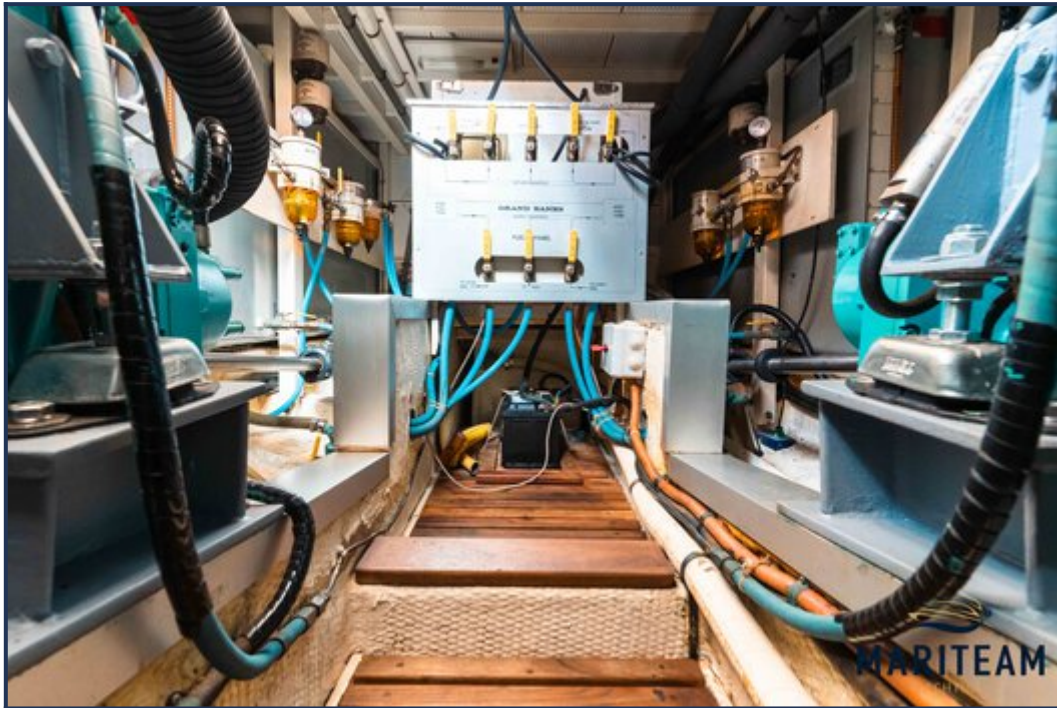
















These particulars are given in good faith as supplied but cannot be guaranteed and cannot be used for contracts.