



## Selene 59 'Charlotte'

LOA (m):	19.84 m
Beam (m):	5.44 m
Draft (m):	1.73 m
Engines:	1x 526hp John Deere
Cabins:	3
Homeport:	Sweden
Price:	€ (not set)

Selene Yachts has been renowned since 1998 for its classically styled, luxurious, and solidly built "full displacement" trawlers. The *CHARLOTTE* is a perfect example of this reputation. With an impressive range of 3.000 miles at 7 knots, she is ideal for long voyages—something the current owners have fully enjoyed since 2015. In addition to experiencing the luxury and comfort of *CHARLOTTE*'s interior, they have maintained the yacht in excellent condition.

## Main specifications

Model:	Selene 59
LOA (m):	19.84 m
Beam (m):	5.44 m
Draft (m):	1.73 m
Year:	2007
Hull Material:	GRP
Cabins:	3
Sleeping places:	6
Number of main engine(s):	1
Power of main engine(s) (hp):	526
Brand of main engine(s):	John Deere
Price:	€ (not set)
VAT status:	EU VAT Paid
HIN number:	CN-XJE59011L708

## General

Name :	Charlotte
Shipyard:	Jet-Tern Marine
CE-category:	A
Displacement (t):	55.8
Hull material:	GRP
Deck material:	GRP
Superstructure material:	GRP
Deck finish:	Teak
Window material:	Single Safety glas
Fuel tank (Litre and material):	8327L 2x GRP

Freshwater Tank (Liter and material):	2270L 1x GRP
Black water tank (Litre and material):	650L 1x GRP
Maximum speed (Kn):	10 kn @ 2100rpm
Cruising speed (Kn):	8 kn @ 1400rpm

## Accommodation

Stove:	Siemens 4 burner induction
Microwave:	Siemens
Oven:	Siemens
Refrigerator:	Liebherr
Freezer:	Liebherr
Interior finish:	Satin
Light:	Led
Dish washer:	Siemens (2016)
Washing machine:	Bosch
Dryer:	Bosch
TV:	TCL Smart TV met Sonos Soundbar (2021)
Router:	2TE Router
Single berths:	2x
Double bed:	4x
Cabins:	3x
Toilets:	2x Tecma electric
Showers:	2x

## Machinery



Motor:	John Deere, 6125 AFM, 504hp
Motor hours:	3034 (October 1st, 2024)
Main engines control (Brand and type):	Twin Disc
Drive (Shaft, IPS, Jet):	Shaft drive
Shaft lubrication:	Watergesmeerd, Asafdichting: Amartech Axiseal (2022)
Prop (Number of blades, material):	4 blade
Emergency engine (Brand, type, hp, gearbox):	Yanmar 75hp
Engine hours emergency engine:	31 (October 1st, 2024)
Emergency engine control (Brand and type):	Twin Disc electric
Emergency engine shaft lubrication:	Watergesmeerd (2022)
Emergency engine prop (Number of blades, material):	2 blade, foldable
Generator (Brand, type, Kw):	Northern lights 20Kw
Generator hours:	1607 (October 1st, 2024)
Bowthruster (Brand, type, elec/hyd):	Wesmar 25hp, hydraulic
Sternthruster (Brand, type, elec/hyd):	Wesmar 25hp, hydraulic
Fuel polishing system:	ESI 1000 Re
Electrical bilge pump:	5x Rule
Manual bilge pump:	Whale-BP4410
Oil change system:	Reverso 24V GP-3025
Watermaker:	Sea Recovery Aqua Whisper 220l/h (2017)
Water pressure pump (Brand, model):	F.E.I.T
Hot water system:	Kabola combi B17
Heating system (brand, model, type):	Kabola central heating
Airconditioning system (Brand, model):	Cruisair (cabins only)
Stabilizer system:	Naiad multisea 2
Macerator pump:	Jabsco (2024)
Grey water tank pump:	Johnson
Steering system:	Hydraulic power steering

Deckwash:	1x
-----------	----

## Electrical system

House battery (Number of battery,type, total Amp, year):	16x 2V Ecobat EDC2-800 (1600Ah total)(2021)
Start battery (Number of battery,type, total Amp, year):	2x 200 Ah (2022)
Generator battery (Number of battery,type, total Amp, year):	2x 150Ah (2022)
Wing engine battery (Number of battery,type, total Amp, year):	1x 160Ah (2022)
DC system (V) AC system (V):	12V/24V/230V
Inverter (V/W/Amp):	Mastervolt 5000w Mass sine 24/5000
Battery charger (V/W/Amp):	House: 2x Mastervolt 24/100-C (2022) Start: 1x Mastervolt Mass 24/25 (2022) Generator: 1x Mastervolt Chargemaster 24/20-3 (2022) emergency engine: 1x Mastervolt Chargemaster 12/25-3 (2022)

## Safety system

Fire extinguisher engine room:	Fireboy MA2-650-FM200 (service overdue)
High water alarm:	Ultra Safety
Life raft:	Plastimo 6 person (service overdue)
EPIRB:	McMurdo
Gas detector:	5x
Fire alarm:	Fireboy

## Navigation system

Compass:	Danforth
Gps plotter:	3 + 2 Hatteland
Radar screen:	Hatteland
Radar :	Furuno (2017)
Depth meter:	Furuno FI-70 (2017)
Log:	Furuno FI-70 (2017)
Wind meter :	Furuno FI-5001 (2017)
VHF:	2x Raymarine 240E (serviced 2021)
AIS:	Furuno FA-50 (2017)
Autopilot:	Furuno NAVpilot-711C (Raymarine Backup)
Remote Control:	Hydronautica
Rudder indicator:	VDO

## Equipment

Anchor:	80kg Ultra Marine + 68kg Mansa
Windlass:	1x Maxwell HWE 3500
Capstan(s):	1x Maxwell 1500 on foredeck, 2x Maxwell 1000 on aftdeck
Gangway:	Opacmare
Tender crane:	Aritex 3,2 max 600kg
Tender:	Caribe 40 with 40hp Honda 4-stroke
Deck shower:	1x hot & cold
Search light:	ACR
Window ventilation:	Sliding and tilting windows
Horn:	kahlenberg























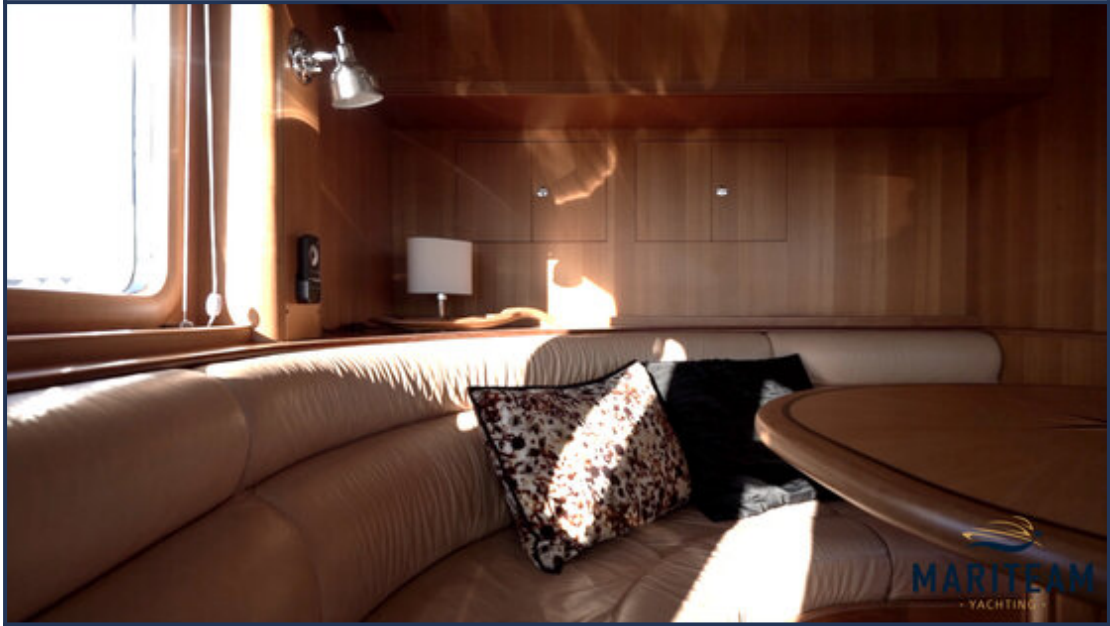
























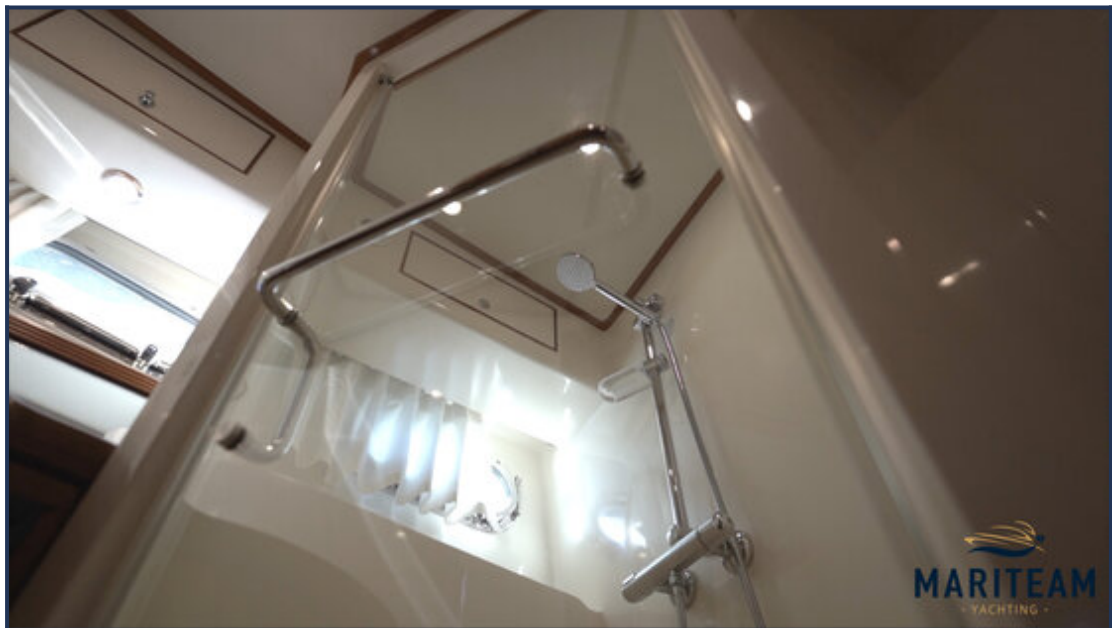
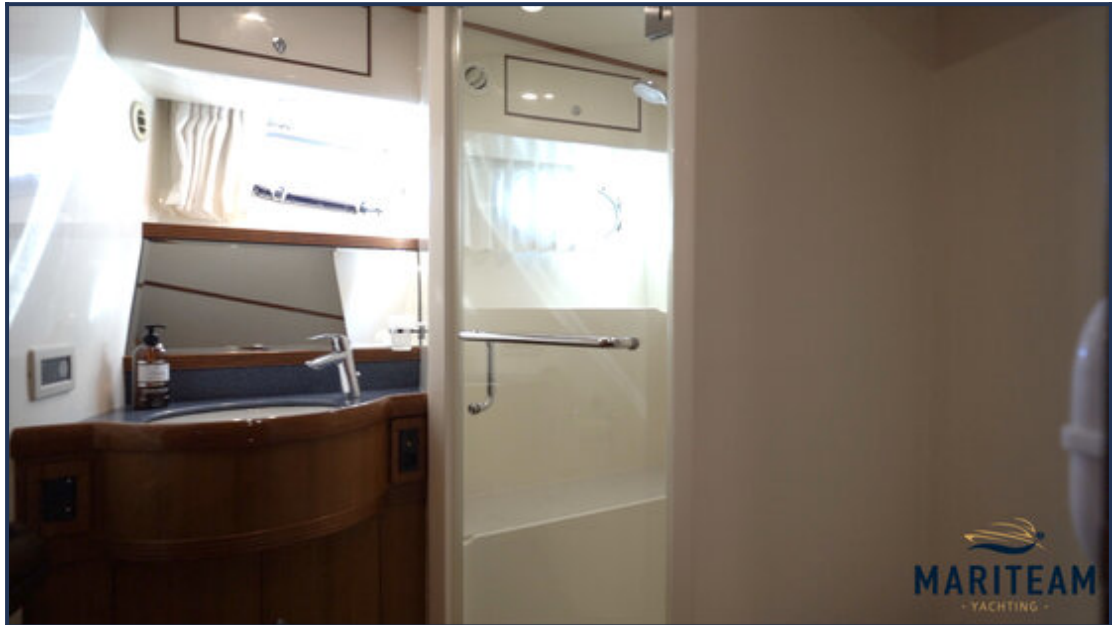
































*These particulars are given in good faith as supplied but cannot be guaranteed and cannot be used for contracts.*